

ESD-Occupational shoes rubber Clog black ESD



Art. 5225

rubber

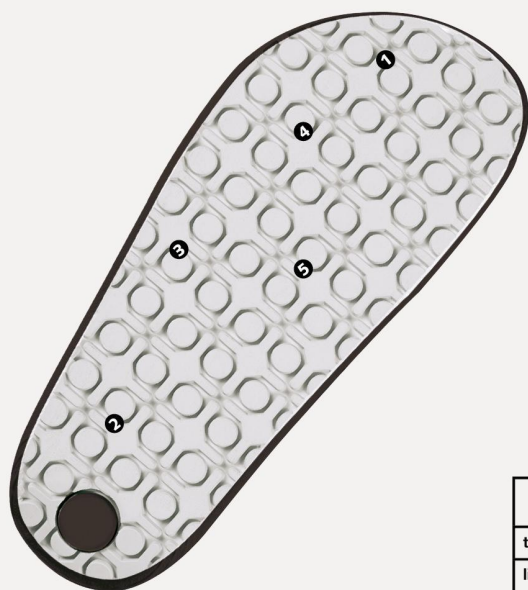
- ▶ Size 36-47
- ▶ CE, EN ISO 20347:2012, OB, SRC
- ▶ TÜV GS-tested safety DIN 4843 part 100 paragraph 3.1v.8/93
- ▶ Smooth leather, black
- ▶ Leather top layer
- ▶ Heel strap non-foldable, adjustable
- ▶ PU midsole
- ▶ Non-slip special rubber walking sole
- ▶ Sanitized treated
- ▶ ESD dissipative according to DIN EN 61340
- ▶ EXPIRED



TECHNOLOGY

OUTSOLE

- 1_ ESD dissipative according to DIN EN 61340
- 2_SRC slip resistance according to EN ISO 20347:2012
- 3_Cross/ circle profile
- 4_Rubber outsole
- 5_Acid and base resistant
- 6_Fuel resistance



	Product qualification DIN EN 61340-5-1:
test method	IEC 61340-5-1
limit values	$R \leq 10^8 \Omega$
average value	$R = 10^7 \Omega$

HEEL STRAP
fixed with adjustable
fastening

