

ESD-Safety shoes Static Control Lace-up shoe black in ATEX design ESD



Art. 31473



- ▶ Size 36-47
- ▶ CE, EN ISO 20345:2011, S1P, SRA
- ▶ Leather with Air-Mesh textile inlays, black in ATEX design
- ▶ Breathable lining with Silver Point
- ▶ Instep area with lacing
- ▶ PU midsole
- ▶ Non-slip special rubber walking sole
- ▶ Composite toe cap
- ▶ Metalfree penetration resistance
- ▶ Replaceable acc Wave insole (article no. 3553)
- ▶ Sanitized treated
- ▶ ESD dissipative according to DIN EN 61340
- ▶ Reflective material
- ▶ EXPIRED



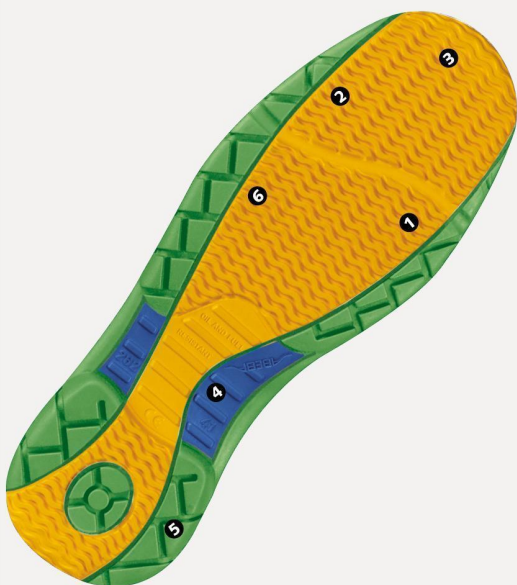
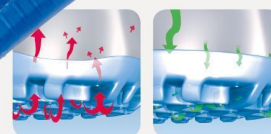
TECHNOLOGY

OUTSOLE

- 1_ ESD dissipative according to DIN EN 61340
- 2_ SRA slip resistance according to EN ISO 20345:2011
- 3_ Rubber outsole, maximum grip
- 4_ Torsions waist hard rubber compound
- 5_ Ankle protection (high lateral stability)
- 6_ Resistant to acid, base and fuel

acc Wave Einlegesohle
(air clima comfort)

3553
Size 36-47



mcc - mono coque cap

S1P
METAL FREE
PENETRATION RESISTANCE



	Product qualification DIN EN 61340-5-1:
test method	IEC 61340-5-1
limit values	$R \leq 10^8 \Omega$
average value	$R = 10^7 \Omega$